

How To remove a stuck label from the LabelWriter?

1. the labelwriter



2. Open the front lid completely.



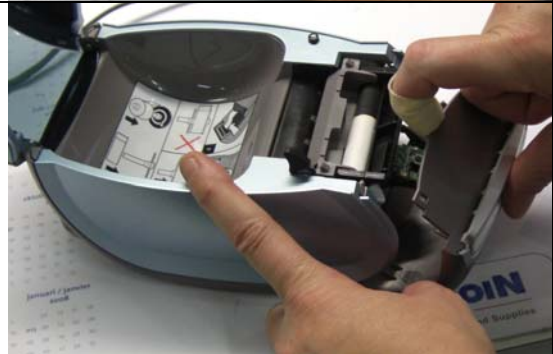
3. Lift up the front cover



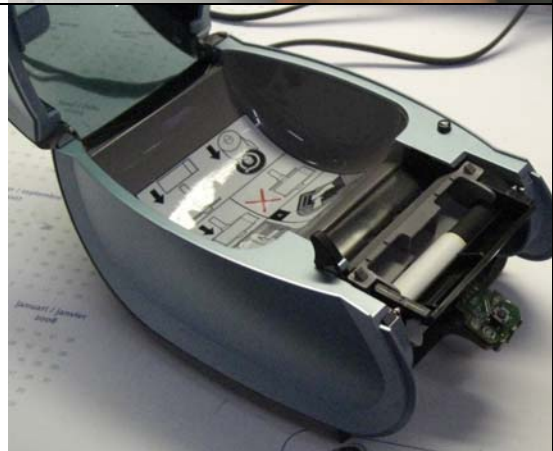
4. Gently take the cover off by pulling it towards the front



5. Continue until completely removed



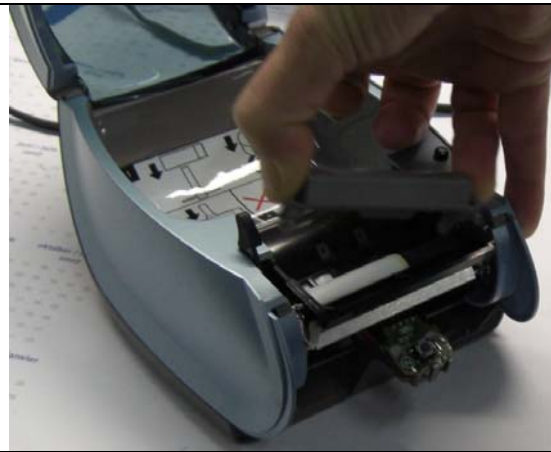
6. The cover is now completely removed



7. lift up the inner guidance mechanism



8. press gently on one side and lift out the hinge



9. Until the whole piece is removed



10. Plug in the power plug



11. the front led indicates the LabelWriter is now powered



12. Cut the label with a cutter knife. Make sure the rubber transport roller does not get damaged.



13. Loosen the label gently by peeling under the stuck labels with the cutter



14. continue until the rubber transport roller is visible



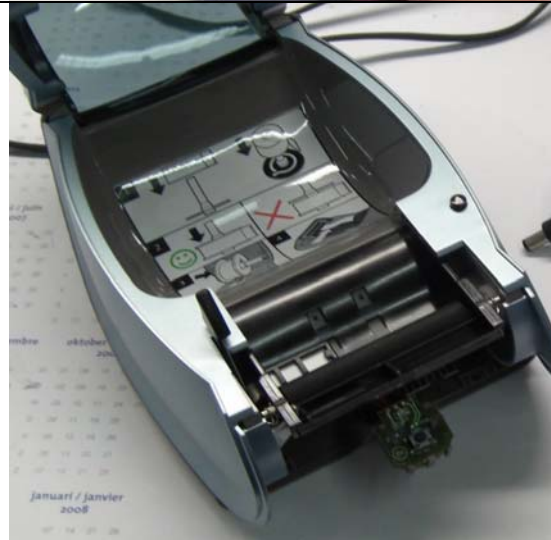
15. press the feed button while gently pulling the label (pull in the direction of the label transport)



16. Continue until all label pieces are removed



17. All pieces have been removed



18. place back the paper guidance piece in the right direction



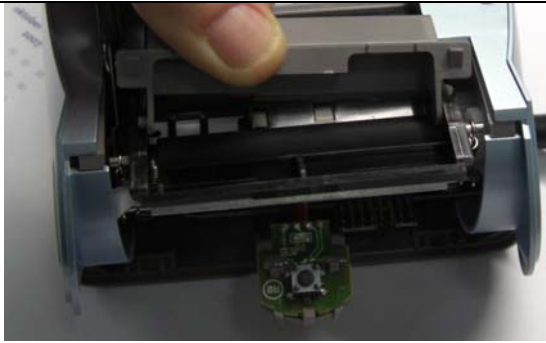
19. first bring the hinge into it's place



20. then place back the complete piece



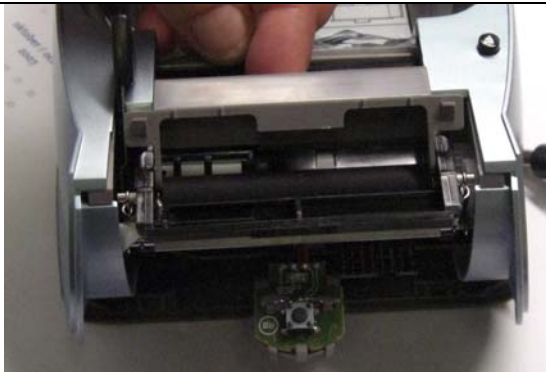
21. click back the other hinge (press a little on the side)



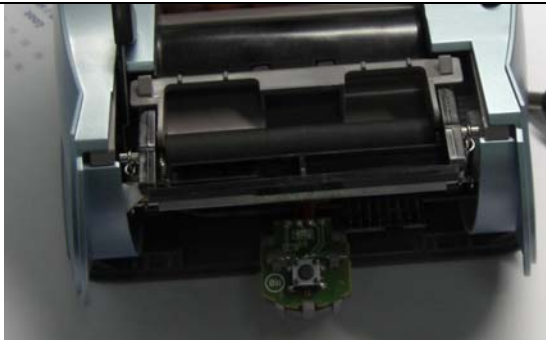
22. when the hinges are in their places, push down gently the complete piece



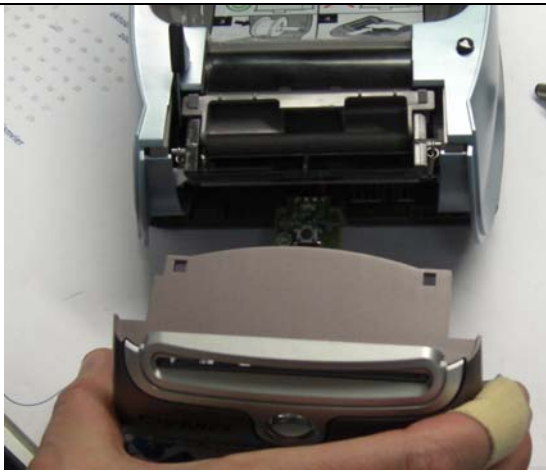
23. check if the guidance piece can move freely in it's hinges



24. place the piece back in to it's original location



25. take the front and move to the front of the labelwriter



26. first make sure the attachment points are aligned ok



27. start with bringing one to its place



28. then also click the other attachment point into location



29. check underneath the labelwriter and push the front into place



30. push firmly until the front is completely in place



31. Your LabelWriter is now ready to print.

