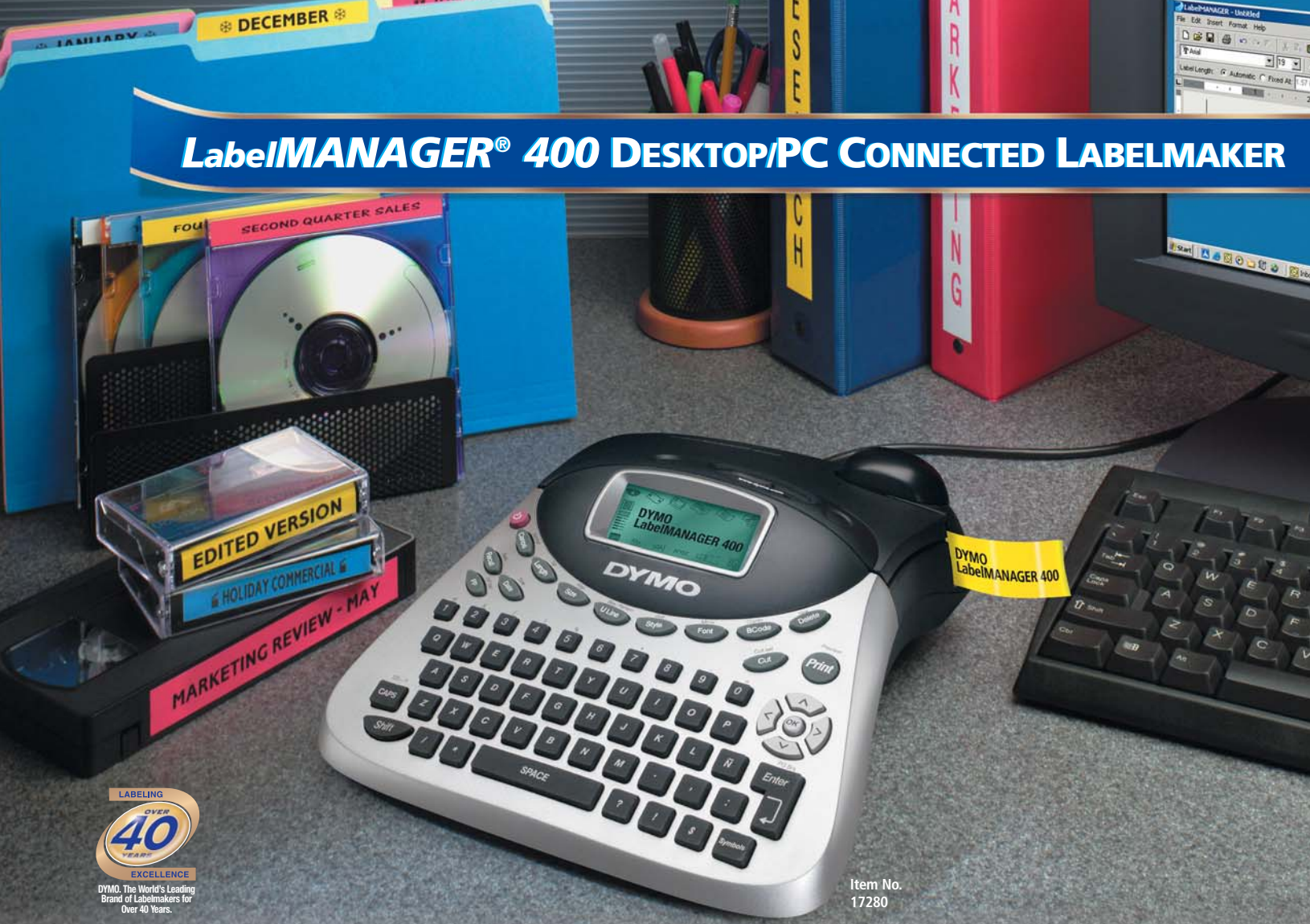


# LabelMANAGER® 400 DESKTOP/PC CONNECTED LABELMAKER



Item No.  
17280

## High-Performance Labeling Designed with the User in Mind.

The DYMO LabelMANAGER 400 brings a new dimension to high-performance labeling and to your desktop: with cutting-edge design, unmatched functionality, ease of use and versatility. The LabelMANAGER 400 can be used on its own or with your PC using DYMO software, which enables you to import barcodes, logos, graphics and typefaces.

LabelMANAGER 400 uses whisper-quiet thermal transfer print technology with a wide range of state-of-the-art features, including automatic cutting, spacious two-line by 16-character display and memory to help create labels faster and easier.

*(See reverse side for features & specifications.)*

### PERFECT FOR LABELING:

- File Folders
- Shelves
- Cabinets and Drawers
- Office Doors
- In/Out Trays
- Binders
- Letters and Packages
- Presentation Materials
- CDs, Diskettes, Zips
- Office Supply Closets
- and more...



The world's leading brand of labelmakers for over 40 years

ORGANIZE YOUR WORLD

**DYMO®**

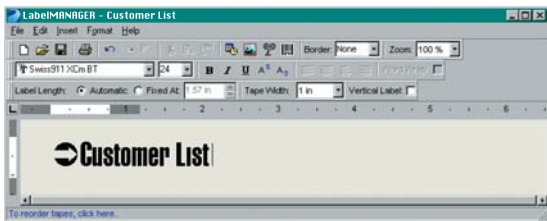
# LabelMANAGER® 400 DESKTOP/PC CONNECTED LABELMAKER

## ADVANCED FEATURES

- Prints professional quality labels on 1/4" (6mm), 3/8" (9mm), 1/2" (12mm), 3/4" (19mm) or 1" (24mm) with easy-peel, split-back DYMO **D1** tape. Each tape is 23' (7m) in length
- Full label customization with 5 fonts, 15 sizes, 11 styles, 6 boxes, 7 background patterns and 6 types of barcodes (UPC-A, UPC-E, CODE 39, CODE 128, EAN18 and EAN13)
- Prints up to 5 lines per label
- Extra large 2 line by 16 character-display with print preview for easy viewing and editing of label information prior to printing
- PC connected via USB with a simple interface to have a full set of on-screen editing options and to import barcodes, logos, graphics and typefaces



Easy-peel split-back tape is split down the middle to make separation of tape backing a snap.



Opening screen with typeface and Graphics

- There are 3 different types of memory (when not connected to a PC):
  - 10 label memory
  - dynamic memory that saves the last 15 printed labels
  - personal preference key allows you to save and recall label formats
- Date and time on the screen and printable on labels
- Electric, automatic cutting for speed and convenience
- Utilizes fast and quiet thermal transfer print technology to create durable labels for thousands of applications
- Easy-to-use with clearly identified function keys and navigation pad
- Special panel to store the handy Quick Reference Guide
- Requires 6 "AA" batteries or an optional AC adapter (not included)
- Includes USB Cable, one 1" (24 mm) black-on-white by 10' **D1** starter tape, software, manual, quick start card and quick reference card

## SYSTEM REQUIREMENTS

PC running Windows '98, ME, 2000 and XP, USB port

## PRODUCT SPECIFICATIONS

Labelmaker Dimensions: 8.5" W x 9.6" D x 3.3" H

Weight: 1.9 lbs.

Warranty: Limited one year

## RESELLER INFORMATION

Item No: 17280

UPC Code: 0 71701 17280 8

Units Per Master Carton: 4

Master Carton Dimensions: 18.1" x 10.9" x 13.46"

## DYMO

*For over four decades, setting the pace in labeling innovation.*

The DYMO brand has always been synonymous with category leadership. Our ideas helped create the labeling category when we introduced our very first embossing labelers more than 40 years ago.

Today, DYMO innovation continues...with a new generation of labeling products that exceed consumer expectations.

## AC ADAPTER

The perfect accessory for electrical functionality to provide added labeling convenience.



For more information or the name of a DYMO dealer, please visit [www.dymo.com](http://www.dymo.com) or call us at **1-800-426-7827**



USA contact: DYMO Corporation 44 Commerce Road Stamford, CT 06902-4561

Canada contact: Esselte Corporation 333 Foster Crescent, Suite 2, Mississauga, Ontario L5R 3Z9 Canada • 1-800-263-6105

**ESSELTE**  
DYMO. AN ESSELTE BRAND

# DYMO®